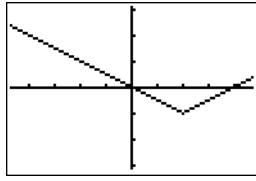


Answer using chromebook-go to classroom!

Warm-up!

1. What is the equation for this graph?

\_\_\_\_\_



2. What is the center of this graph?

$$y = 3|x+5|-2$$

1.  $y = .5|x-2|-1$   
 2.  $V(-5, -2)$

$$y = |2x+1| - 3$$

Cannot factor out of / /

$$2|x + \frac{1}{2}|$$

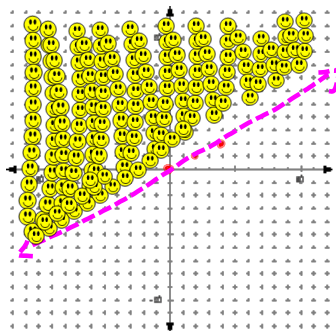
$$V(-\frac{1}{2}, -3)$$

## 2-7 Graphing Inequalities

Example 1

$$2y > x$$

$$y > \frac{1}{2}x$$

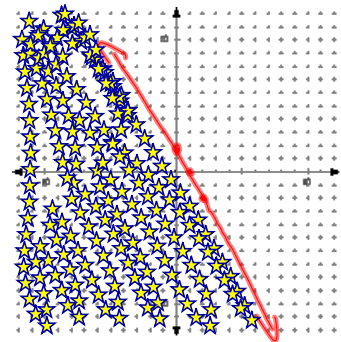


Example 2

$$4x + 2y \leq 4$$

$$2y \leq -4x + 4$$

$$y \leq -2x + 2$$

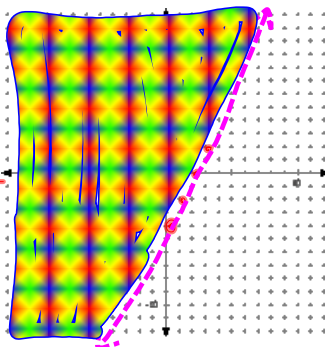


Example 3

$$6x - 3y < 12$$

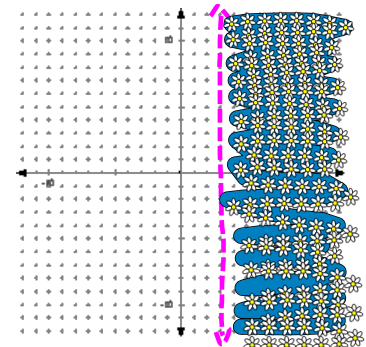
$$-3y < -6x + 12$$

$$y > 2x - 4$$



Example 4

$$x > 3$$

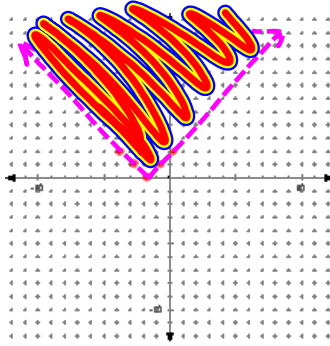


## Absolute Value

Example

$$y > |x + 2|$$

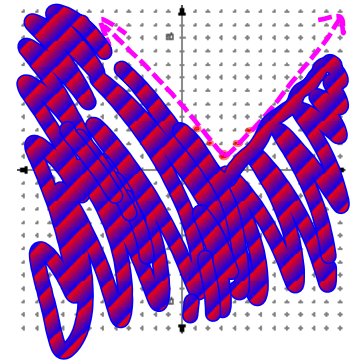
$$V(-2, 0)$$



Example

$$y < |x - 3| + 1$$

$$V(3, 1)$$



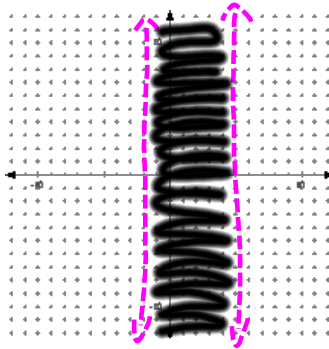
Example

$$-2 < x < 5$$

$$-2 < x \text{ AND } x < 5$$

$$x > -2$$

Hi



**SHOPPING** For Exercises 10–12, use the following information.  
Gwen wants to buy some cassettes that cost \$10 each and some CDs that cost \$13 each. She has \$40 to spend.

10. Write an inequality to represent the situation, where  $c$  is the number of cassettes she buys and  $d$  is the number of CDs.

11. Graph the inequality.

12. Can she buy 3 cassettes and 2 CDs? Explain.

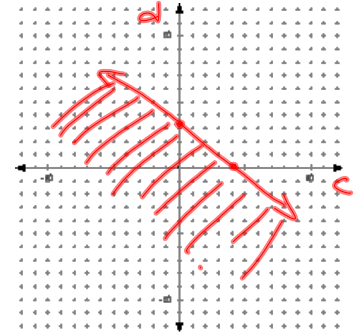
Open to page 98  
#s 10-12

$$10c + 13d \leq 40$$

$$(0, 3\frac{1}{3})$$

$$(4, 0)$$

No



HW

p 98 14, 16, 20, 23, 24, 26-28, 35-37

Graph Paper